

Quick Assembly Guide

For JF1 / JR1 / JG1



Table of Contents

1. What's in the Box	3
1.1 Main Box	3
1.2 Accessory Box	4
2. Component Assembly and Adjustment	6
2.1 Stem and Handlebars	6
2.2 Front Wheel	7
2.3 Pedals.....	8
2.4 The Saddle Post and Rear Reflector.....	9
3. Pre-ride Safety Check	10

1. What's in the Box

1.1 Main Box

The main box includes the following items.

- The e-bike JF1 / JR1 / JG1
- Front wheel (to be assembled)
- The accessory box

JF1



JR1 / JG1



1.2 Accessory Box

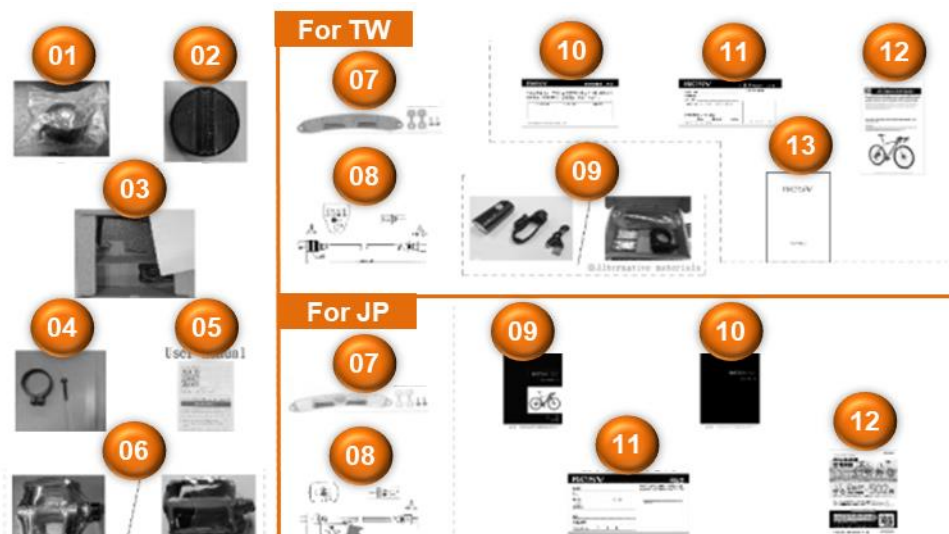
JF1 / JR1



- ① Warranty Booklet
- ② Signature Card
- ③ Quick Start Guide
- ④ Information of Rear Derailleur
- ⑤ Information of Shifting Lever
- ⑥ Installation Instruction of Mechanical Disc Brake System
- ⑦ Warranty Card

- ⑧ Charger
- ⑨ Bell
- ⑩ Rear Reflector
- ⑪ Front Light
- ⑫ Quick Release
- ⑬ Pedals

JG1



• For Taiwan (TW):

- | | |
|----------------------------------|---------------------|
| ① Bell | ⑧ Cable |
| ② Rear Reflector | ⑨ Front Light |
| ③ Charger | ⑩ Signature Card |
| ④ Reflector tool | ⑪ Warranty Card |
| ⑤ Information of Rear Derailleur | ⑫ Quick Start Guide |
| ⑥ Pedals | ⑬ Warranty Booklet |
| ⑦ Wheel Reflector | |

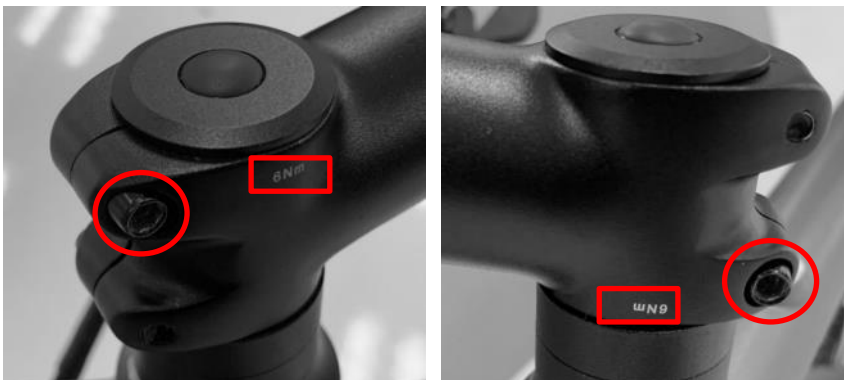
• For Japan (JP):

- | | |
|----------------------------------|-------------------------------------|
| ① Bell | ⑦ Wheel Reflector |
| ② Rear Reflector | ⑧ Cable |
| ③ Charger | ⑨ User Manual |
| ④ Reflector tool | ⑩ Safety Precautions |
| ⑤ Information of Rear Derailleur | ⑪ Warranty Card |
| ⑥ Pedals | ⑫ Loss Prevention Insurance Leaflet |

2. Component Assembly and Adjustment

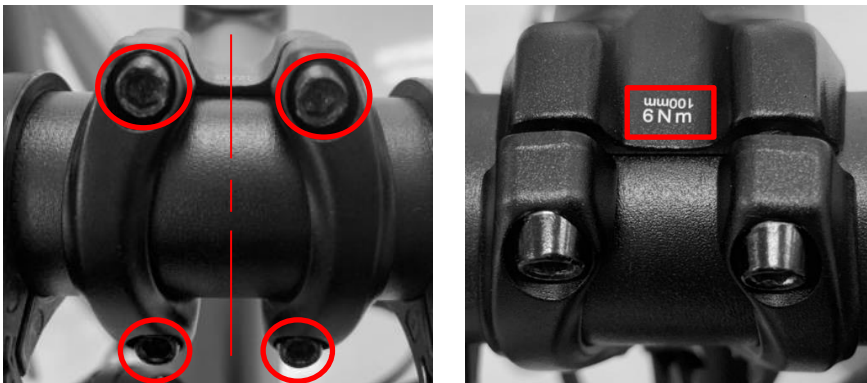
2.1 Stem and Handlebars

1. Rotate the stem frontwards and tighten the bolts indicated below to 6 Nm as marked on the stem.



2. Adjust the angles of the stem and handlebars and the height properly. Then secure the bolts to the torque value marked to fix the stem.

Note: Make the gap of both sides consistent.



2.2 Front Wheel

1. Insert the front wheel into the fork.

JF1



JR1



JG1



2. Install the quick release to the front wheel.
 - a) Grab the lever and spring close to the lever.
 - b) Remove the nut and the other spring.
 - c) Insert the screw of the quick release to the front wheel from the side with the brake disc.
 - d) Install the spring to the screw. The small ends of both springs must be towards the center of the front wheel.
 - e) Tighten the nut. Then flip the lever with the stamped “CLOSE” facing outwards to tighten up the quick release.

Note: Be sure to make the lever staggered with the fork.

JF1



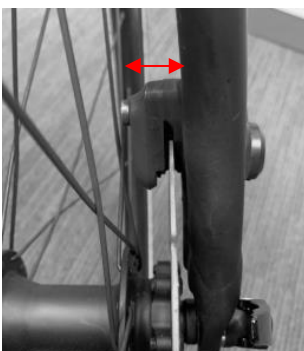
JR1



JG1

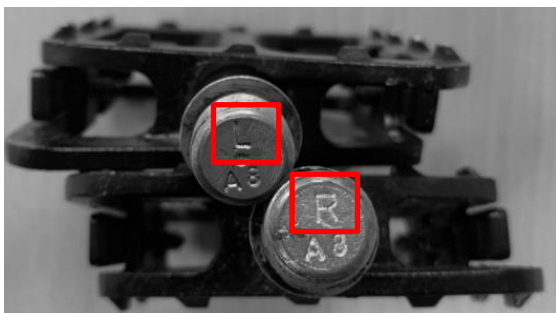


3. Rotate the front wheel. If the wheel or any of the spoke touches the brake caliper, adjust the position of the brake caliper.



2.3 Pedals

1. Pay attention to the L / R letters marked on the pedals indicating the left / right side.



2. Attach the right pedal marked with “R” to the right crank arm. Use a torque wrench or rotate the pedal clockwise to tighten the pedal.



3. Attach the left pedal marked with “L” to the left crank arm. Use a torque wrench or rotate the pedal counter-clockwise to tighten the pedal.



2.4 The Saddle Post and Rear Reflector

1. To adjust the saddle height for the JF1, release the saddle post clamp.
For the JR1 / JG1, use a torque wrench to loosen the hexagonal bolt and release the saddle post clamp to adjust the saddle height.

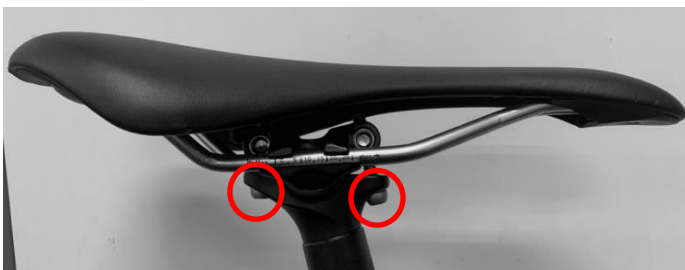
JF1



JR1 / JG1



2. Release two bolts underneath the saddle to adjust the angle and the horizontal position of the saddle. Exert force by referring to the torque value marked on the saddle post.



3. Clamp the rear reflector to the saddle post.



3. Pre-ride Safety Check

1. Make sure to pump the tire and the tire pressure is normal.
2. Inspect the condition of the brakes, derailleur, and chain device – they must function well.
3. Check the function of the electric module and the remaining battery power level.

Please refer to the user manual for more details.